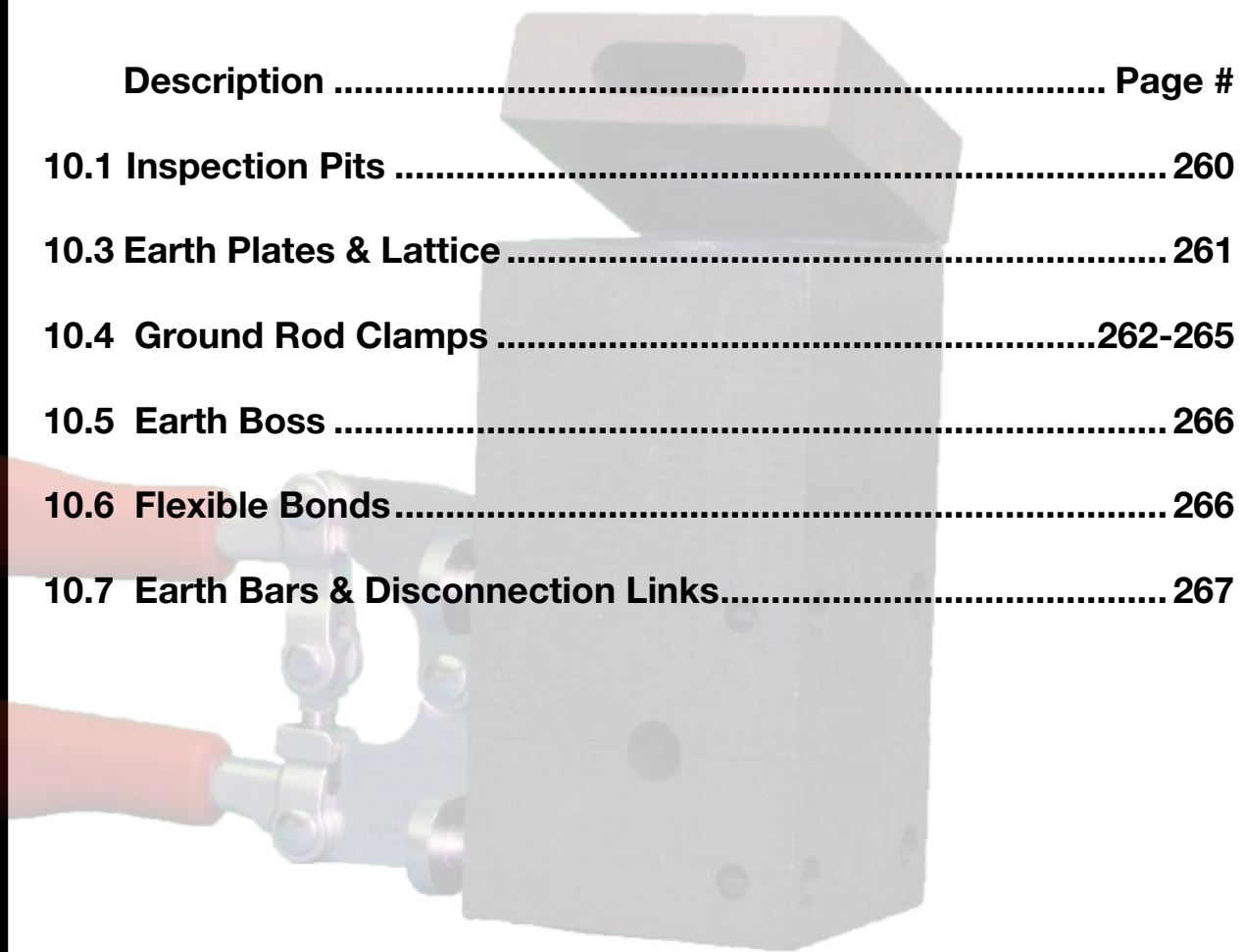


# **Section 10**

## **Metric Earthing/Grounding Products**



<b>Description .....</b>	<b>Page #</b>
<b>10.1 Inspection Pits .....</b>	<b>260</b>
<b>10.3 Earth Plates &amp; Lattice .....</b>	<b>261</b>
<b>10.4 Ground Rod Clamps .....</b>	<b>262-265</b>
<b>10.5 Earth Boss .....</b>	<b>266</b>
<b>10.6 Flexible Bonds .....</b>	<b>266</b>
<b>10.7 Earth Bars &amp; Disconnection Links.....</b>	<b>267</b>

**INTERNATIONAL METRIC INTERNATIONAL METRIC INTERNATIONAL METRIC**

**Section 10 - Metric Earthing Grounding Products**



**Connecting Power to Your World™**



## INSPECTION PITS

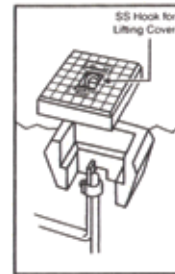
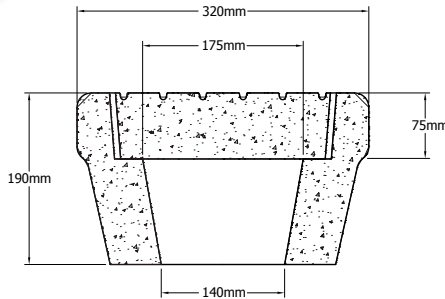
### Concrete Inspection Pit

The Concrete Inspection Pit is load rated to 5,000 kgs. and is suitable for most types of earthing and lightning protection installations.

The Pit can have an earth bar fitted diagonally across in slots provided for multiple connections.



<b>Concrete Inspection Pit</b>
<b>Catalog #</b>
38-8011-01

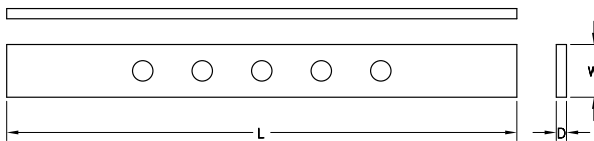
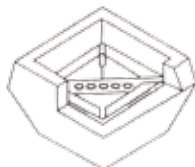
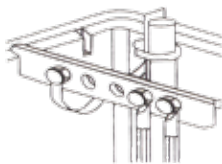


### Earth Bars for Inspection Pit

Earth Bars are used for fitting into slots provided in the earth pit where multiple connections are required to the earth rod.



Earth Bars for Inspection Pit				
Catalog #	L (mm)	W (mm)	D (mm)	# of Holes
38-8012-01	300	31	6	5
38-8012-02	300	31	6	7
38-8012-03	225	31	6	5

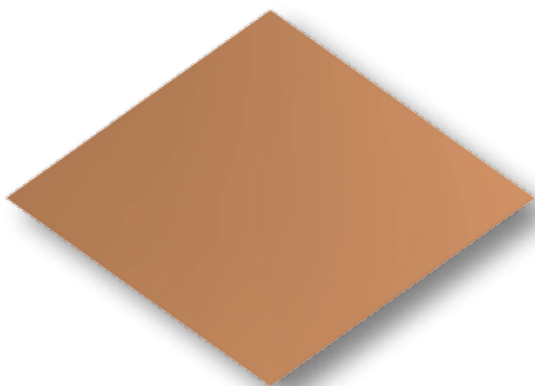


## EARTH PLATES & LATTICE

### Earth Plate

Earth Plates are used where rods are unsuitable. Earth Plates provide a long lasting alternative when compared to earth rods.

Earth Plate		
Solid Copper Catalog #	Copper Bonded Catalog #	Plate Size (mm)
38-8015-01	38-8016-01	500 x 500 x 1.5
38-8015-02	38-8016-02	500 x 500 x 3
38-8015-03	38-8016-03	600 x 600 x 1.5
38-8015-04	38-8016-04	600 x 600 x 3
38-8015-05	38-8016-05	900 x 900 x 1.5
38-8015-06	38-8016-06	900 x 900 x 3
38-6833-00	N/A	1000 x 1000 x 1
38-8015-07	38-8016-07	1000 x 1000 x 1.5
38-8015-08	38-8016-08	1000 x 1000 x 3



### Earth Lattice

Lattice earth mats are used as an alternative to earth plates

Earth Lattice			
Catalog #	Lattice Size (mm)	Conductor Size (mm)	No. of Strips
38-8017-01	500 x 500	25 x 3	5 x 5
38-8017-02	600 x 600	25 x 3	5 x 5
38-8017-03	900 x 900	25 x 3	5 x 5
38-8017-04	900 x 900	50 x 6	7 x 7
38-8017-05	1000 x 1000	25 x 3	5 x 5
38-8017-06	1000 x 1000	50 x 6	7 x 7



# GROUND ROD CLAMPS

thermOweld® offers a variety of ground rod clamps suitable for different applications. Conductivity, Mechanical strength and corrosion resistance are important considerations in clamp design to ensure the earthing system is perfect for the life time of the system. All clamps are made of high strength copper alloy bodies and screws of aluminum bronze, phosphor bronze, and stainless steel etc... (commercial Brass is never used)

## Rod to Tape Clamp

### Type 'A'

Used for joining ground rods to copper tapes, these clamps are available to suit different sizes of earth rods and copper tapes.

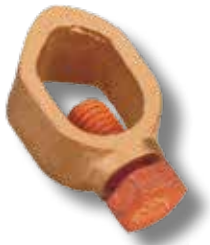


Rod to Tape Clamp - Type 'A'		
Catalog #	Rod Dia (mm)	Tape Width (mm)
38-8018-01	12 - 20	25
38-8018-02	12 - 20	31
38-8018-03	12 - 20	38
38-8018-04	12 - 20	50

## Rod to Cable Clamp

### Type 'G'

These clamps are used for joining ground rods to copper cables.



Rod to Tape Clamp - Type 'G'		
Catalog #	Rod Dia (mm)	Conductor Range (mm <sup>2</sup> )
38-8019-01	12.7	16 - 70
38-8019-02	14.2	16 - 70
38-8019-03	17.2	35 - 95
38-8019-04	20.0	50 - 150
38-8019-05	25.0	70 - 185

## GROUND ROD CLAMPS

### U Bolt Rod Clamp

**Type 'E1'**

These clamps are used to connect tape to the ground rod.

U Bolt Rod Clamp - Type 'E1'		
Catalog #	Rod Dia (mm)	Tape Width (mm)
38-8020-01	12 - 20	25 - 50
38-8020-02	25	25 - 50



### Rod to Tape Clamp

**Type 'E2'**

These clamps are used to connect tape to the ground rod. This clamp is provided with an additional plate to fix the tape in a vertical position as well.

Rod to Tape Clamp - Type 'E2'		
Catalog #	Rod Dia (mm)	Tape Width (mm)
38-8021-01	12 - 20	25
38-8021-02	25	25
38-8021-03	12 - 20	50
38-8021-04	25	50

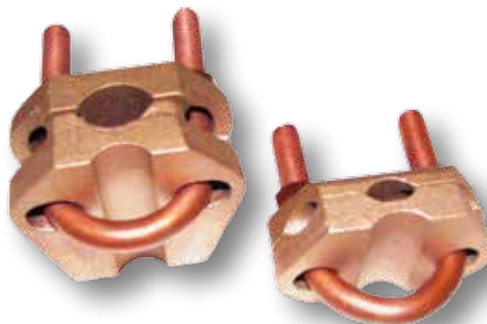


### Rod to Cable Clamp

**Type 'GUV'**

Heavy Duty Copper Alloy Double Plate Clamps are suitable for connecting Ground Rod with stranded Cables / round conductors.

Rod to Cable Clamp - Type 'GUV'		
Catalog #	Rod Dia (mm)	Conductor Range (mm <sup>2</sup> )
38-8022-01	12 - 20	35 - 185
38-8022-02	16 - 25	70 - 300



# GROUND ROD CLAMPS

## Rod to Cable and Tape Clamp

**Type 'GUT'**

These Special Duty Copper Alloy Tri Plate Clamps are suitable for connecting all the conductors in a single clamp, like; Ground Rods with stranded Cables, round conductors and copper tape.



Rod to Cable & Tape Clamp - Type 'GUT'			
Catalog #	Rod Dia (mm)	Conductor Range (mm)	Tape Width (mm)
38-8023-01	14 - 25	50 - 185	25

## Rod to Cable Clamp

**Type 'SCE'**

Heavy Duty Copper Alloy Double Plate Clamps are suitable for connecting Ground Rods with stranded Cables / round conductors.



Rod To Cable Clamp - Type 'SCE'		
Catalog #	Rod Dia (mm)	Conductor Range (mm <sup>2</sup> )
38-8024-01	12 - 20	35 - 185
38-8024-02	16 - 25	70 - 300

## Rod to Cable Lug Clamp

**Type 'B'**

These clamps are used to connect cable lugs to ground rods.



Rod to Cable Lug Clamp - Type 'B'	
Catalog #	Rod Dia (mm)
38-8039-01	12 - 20

## GROUND ROD CLAMPS

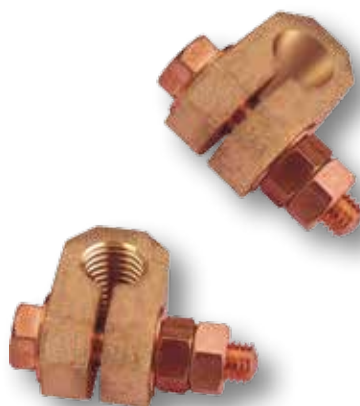
### Split Connector Clamp

#### Type 'L'

Used with threaded and unthreaded rods, suitable for connecting ground rods with cable lugs.

Rod to Cable Lug Clamp - Type 'L'	
Catalog #	Rod Dia (mm)
38-8040-01	12.7
38-8040-02	14.2
38-8040-03	15.0
38-8040-04	16.0
38-8040-05	17.2
38-8040-06	20.0

Rod to Cable Lug Clamp - Type 'L'	
Catalog #	Thread Dia
38-8040-07	9/16"
38-8040-08	5/8"
38-8040-09	3/4"



## EARTH BONDS

### Earth Boss

thermOweld® Earth Boss are welded to steel vessels, tanks and structures to provide an earth point to connect to the main earthing system. Wrap the bond and connection with Petrolatum Tape. Continuous fillet weld of 5 mm is recommended.



Earth Boss			
Catalog #	Dia (mm)	Length (mm)	Stud Size (mm)
38-8046-01	30	30	10 x 30
38-8046-02	30	40	10 x 35
38-8046-03	40	40	10 x 35
38-8046-04	50	50	10 x 40

### Flexible Braid Bond

Flexible Copper Braids are suitable for earth bonding where flexibility is required or the bond is subject to movements (Fences, Gates, Doors, Etc..). Other materials, sizes and types of braid can be made to order.

Flexible Braid Bond				
Catalog #	mm <sup>2</sup>	Center to Center Dist. of Fixing Hole (mm)	Braid Dimension (mm)	Hole Size (mm)
38-8054-03	35	200	25 x 3.5	12
38-8054-04	35	300	25 x 3.5	12
38-8054-05	35	400	25 x 3.5	12



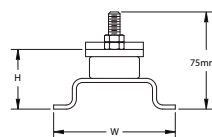


## EARTH BARS & DISCONNECTION LINKS

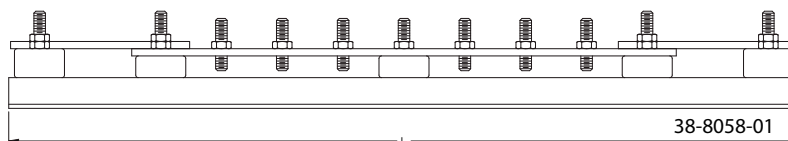
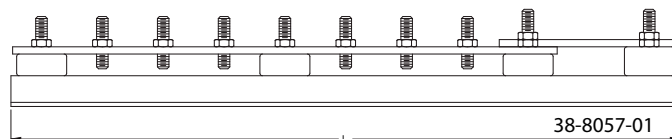
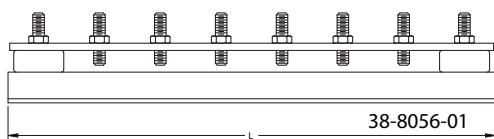
### Earth Bars & Disconnection Links

Earth Bars are an efficient and convenient solution for providing a common earth point to connect to the main earthing system. Integral disconnecting links are provided for isolation at the time of testing. These Earth Bars come in a variety of specifications and sizes to suit different applications. The standard sizes are shown in the table with many variations.

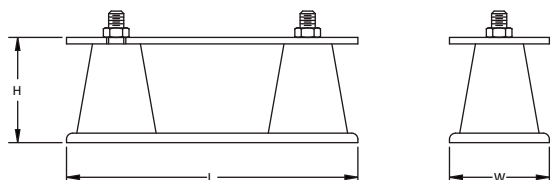
Other sizes and variations can be made to order.



Earth Bars								
Terminals	W (mm)	H (mm)	L (Link-0)	Catalog #	L (Link-1)	Catalog #	L (Link-2)	Catalog #
6	90	48	400	38-8056-01	475	38-8057-01	550	38-8058-01
8	90	48	500	38-8056-02	575	38-8057-02	650	38-8058-02
10	90	48	650	38-8056-03	725	38-8057-03	800	38-8058-03
12	90	48	750	38-8056-04	825	38-8057-04	900	38-8058-04
14	90	48	850	38-8056-05	925	38-8057-05	1000	38-8058-05
16	90	48	950	38-8056-06	1025	38-8057-06	1100	38-8058-06
18	90	48	1050	38-8056-07	1125	38-8057-07	1200	38-8058-07
20	90	48	1200	38-8056-08	1275	38-8057-08	1350	38-8058-08
22	90	48	1300	38-8056-09	1375	38-8057-09	1450	38-8058-09
24	90	48	1400	38-8056-10	1475	38-8057-10	1550	38-8058-10
26	90	48	1500	38-8056-11	1575	38-8057-11	1650	38-8058-11
28	90	48	1650	38-8056-12	1725	38-8057-12	1800	38-8058-12
30	90	48	1750	38-8056-13	1825	38-8057-13	1900	38-8058-13



Disconnection Links			
Catalog #	L (mm)	W (mm)	H (mm)
38-8059-01	152	14-1	12 - 32



38-8059-01